



ANOKHI

SPRING 2014



Table of Contents

SCARVES

2014 SPRING COLLECTION. 3
Available in 30x30 squares and 15x72 rectangles.

2013 AUTUMN COLLECTION. 6
Available in all scarf sizes.

HEADSCARF TYING GUIDE. 7

PREVIOUS COLLECTIONS. 8
Available in all scarf sizes.

PREVIOUS COLLECTIONS - 30x30 ONLY. 16
These prints are now only available in the 30x30 scarf.

ABOUT ANOKHI

COMPANY INFORMATION. 20

CLOTHING

SARONGS. 22

KAFTANS. 24

KIMONOS. 26

TUNICS. 27
Available in peasant style, straight style and bias cut.

TABLE LINENS

TABLECLOTHS AND NAPKINS. 30

HOW TO ORDER:

1. By Phone: 978.341.0753
2. By Fax: 208.977.8588
3. By Email: anokhi@anokhiusa.com

Please note that our minimum opening order is \$200 (in any combination of goods) and subsequent orders have a \$150 minimum.

2014 Spring Scarves



coral blossom



big red



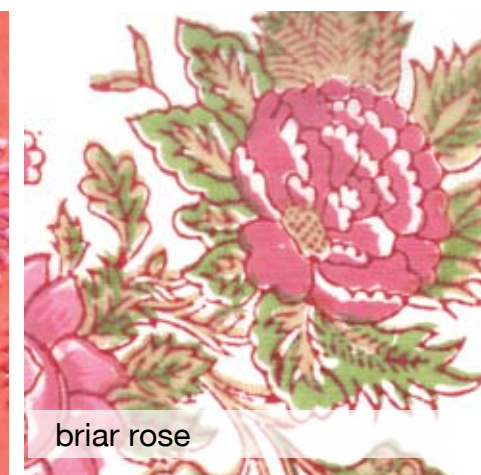
salmon trumpet flower



lavender teardrop



hot paisley



briar rose



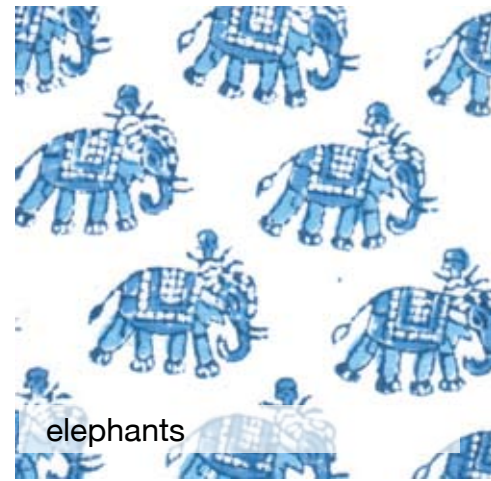
briar rose aqua



Our scarves are hand printed with wooden blocks on 100% cotton voile. Each print has a complementary border.

The prints on pages 3-5 are available in our two most popular sizes:

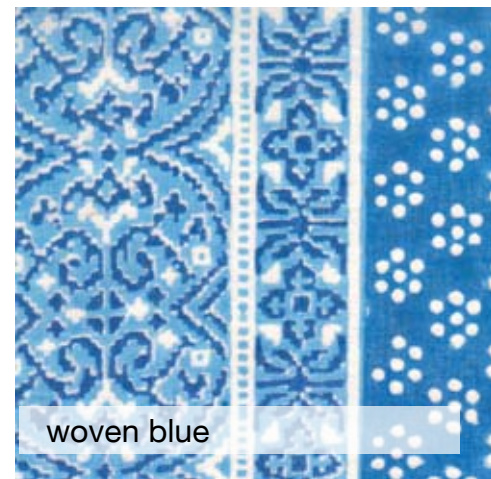
30x30": \$12
 15x72": \$14



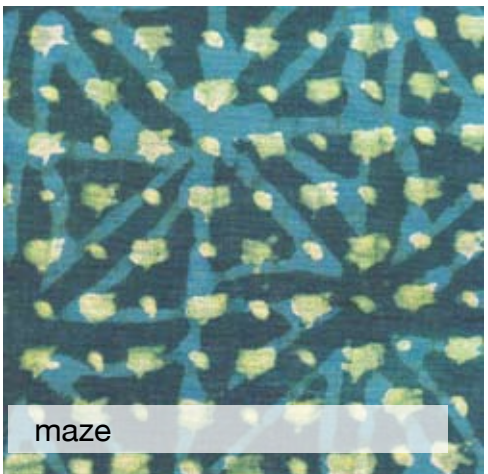
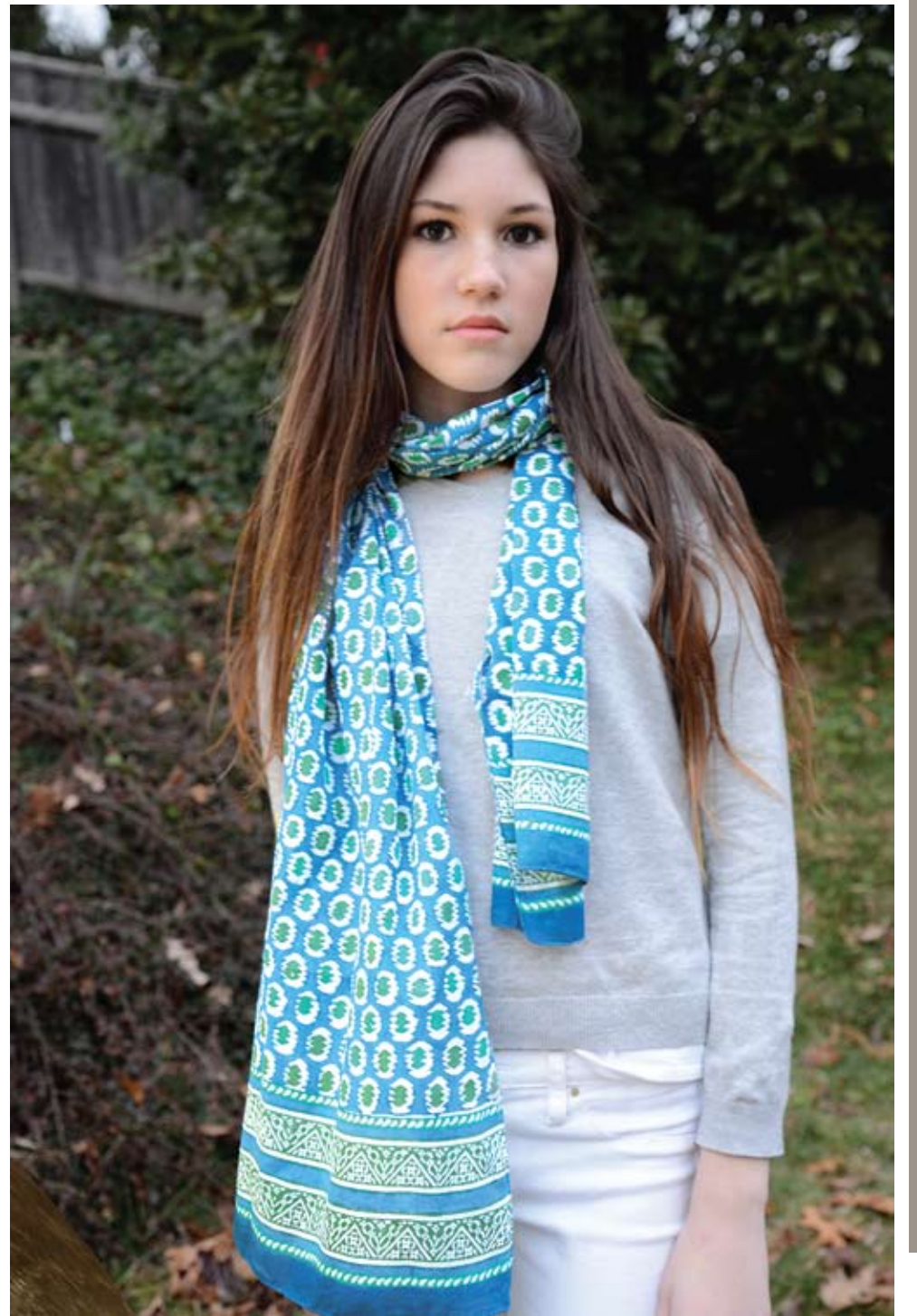
elephants



faded flowers



woven blue



maze



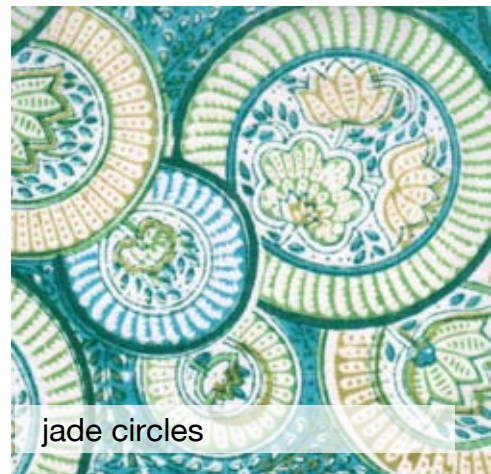
black on white



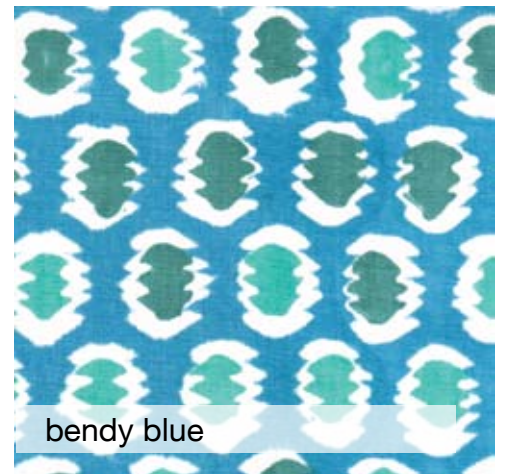
lilies on indigo



briar rose blue



jade circles



bendy blue

2013 Autumn Scarves

All scarves on this page are available in the following sizes (unless otherwise indicated):
 30x30" square: \$12
 36x36" square: \$18
 45x45" square: \$22
 15x72" rect: \$14



coral flame tree



blue flame tree



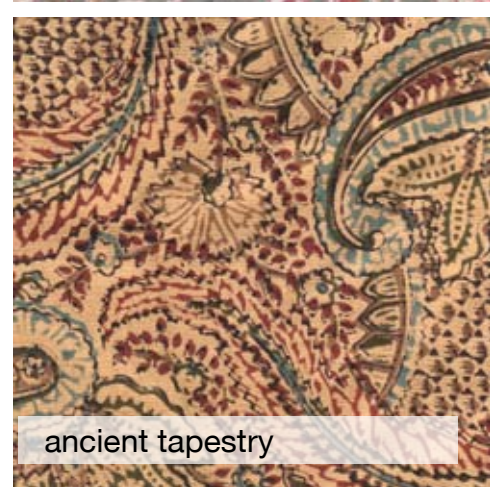
autumn wildflowers



india



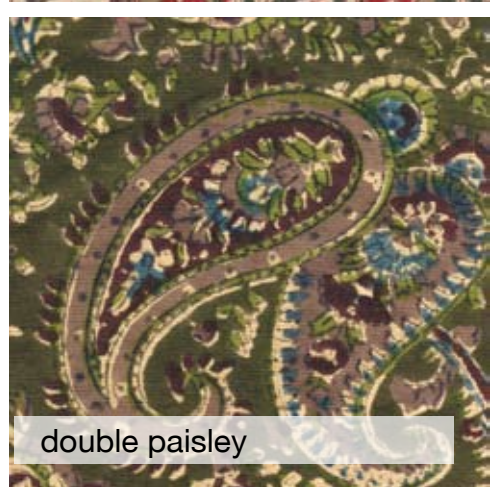
tulip stripe



ancient tapestry



fall flowers



double paisley

Tying Guide

For many years now we have been receiving regular phone calls and emails from women who use our scarves as head coverings. Most of these women are struggling with hair loss for one reason or another, and we are so glad that our scarves can help. When a woman tells us that Anokhi scarves have helped her to feel good when she was going through her worst days, well, the sun just seems to shine a little brighter.

Our scarves are a fantastic choice for anyone experiencing hair loss. Our super soft 100% cotton voile is really gentle on sensitive, irritated scalps, and it won't slip around or get all sweaty like synthetic fibers do.

For our part, we have created a 16 page tying guide, with detailed instructions for tying all of our four different scarf sizes on the head. So now, with this new guide and hundreds of prints to choose from, we are sure that there is a scarf out there to help any woman get through her roughest day. And that means a lot to us.

The guides are FREE (at a rate of one per scarf), so go ahead and add some to your order today!



Sample pages:

1. Place center of a 15' x 72" scarf across the top of the head & draw the ends back.
2. Tie a knot at the nape of the neck & pull tight.
3. Bring the ends of the scarf to front & twist the ends lightly from nape to scarf border.
4. Cross the twisted ends of the scarf over the top of the head.
5. Bring the ends of the scarf back to the nape of neck & tuck the ends under.
6. Adjust the scarf across the forehead if necessary.

1-978-341-0743 www.anokhiusa.com © Anokhi USA 2013

Scarves: Previous Collections

All scarves on pages 6-15 are available in the following sizes (unless otherwise indicated):

30x30" square: \$12 45x45" square: \$22
36x36" square: \$18 15x72" rectangle: \$14



not available in 30x30
50's natural



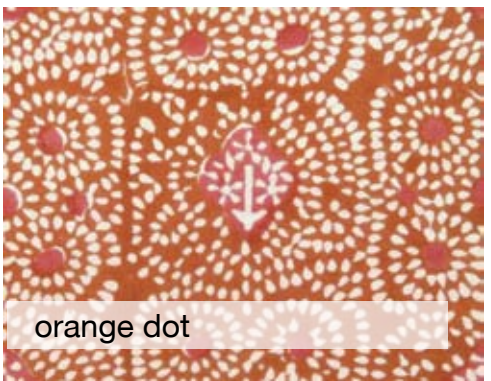
not available in 36x36
dutch garden



not available in 36x36
red hearts



not available in 30x30
antique cypress



orange dot



available in 15x72 ONLY
india check



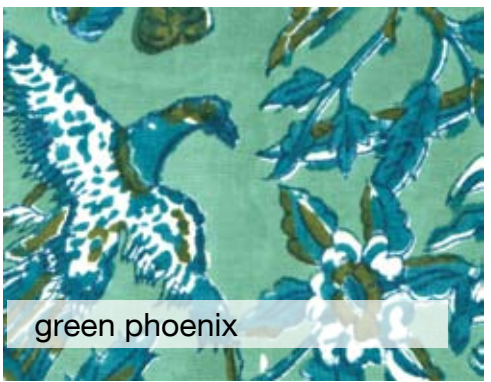
modern floral



not available in 30x30
gray spades



indigo stencil flower



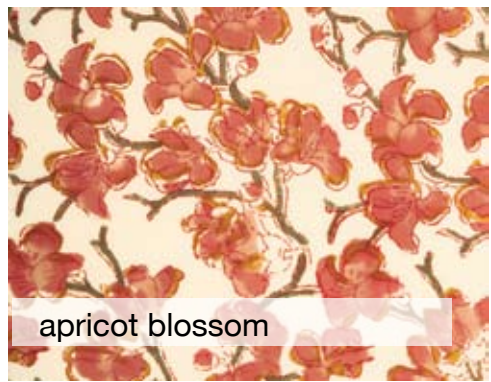
green phoenix



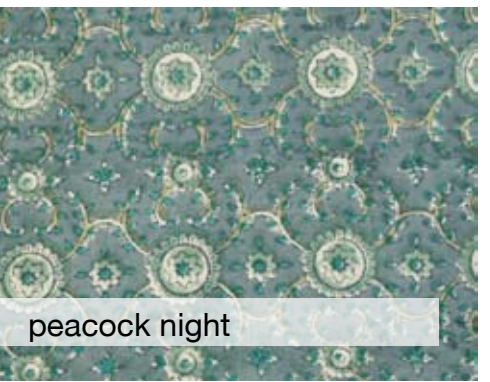
not available in 36x36
sweet coral



tribal stripe



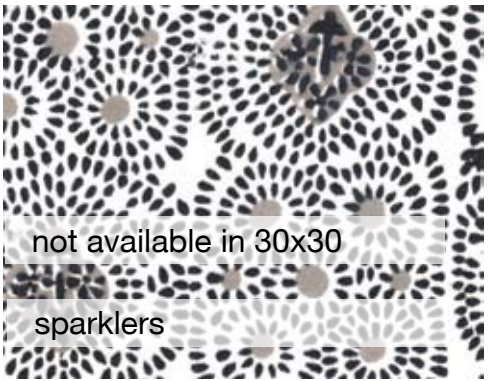
apricot blossom



peacock night



snowdrops



not available in 30x30
sparklers



orange vase



oleander



not available in 15x72
bitsy citrus



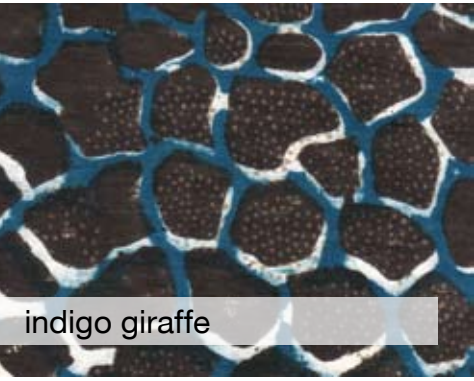
graphite floral



ikat



sea flower



indigo giraffe



not available in 30x30
taupe mosaic



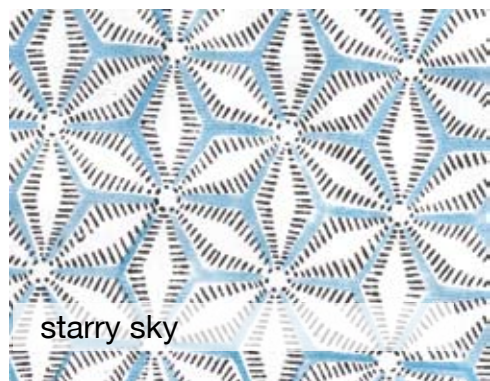
coral leaves



autumn garden

not available in 45x45

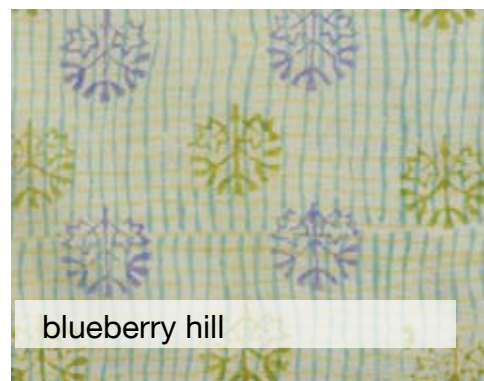
white



starry sky



cornflower lace



blueberry hill



not available in 36x36

pink chrysanthemum

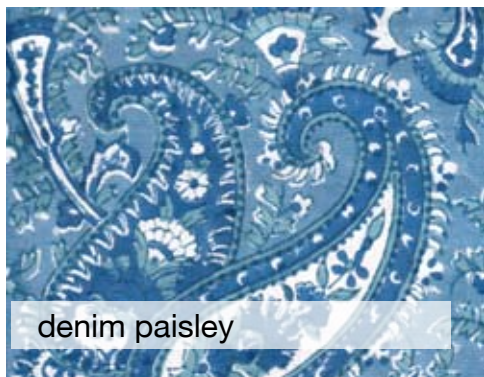


not avail. in 45x45 or 15x72

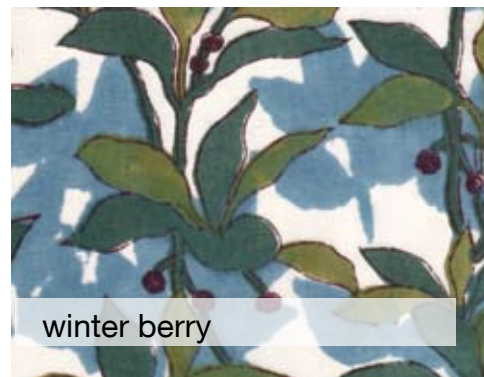
natural



goldenrod stripe



denim paisley



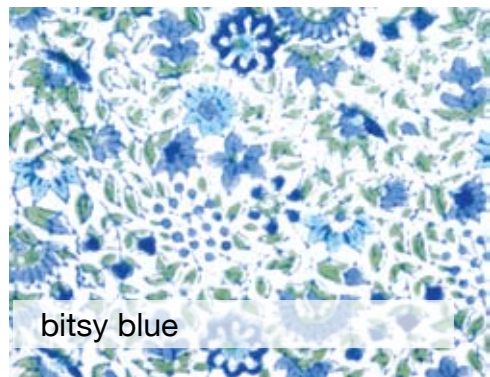
winter berry



water flower



goldenrod



bitsy blue



magnolia



bramble white



ancient floral



colored sands

not available in 45x45

khaki

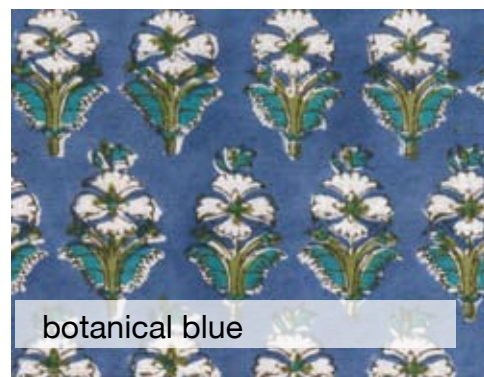


porcelain blue



not available in 30x30

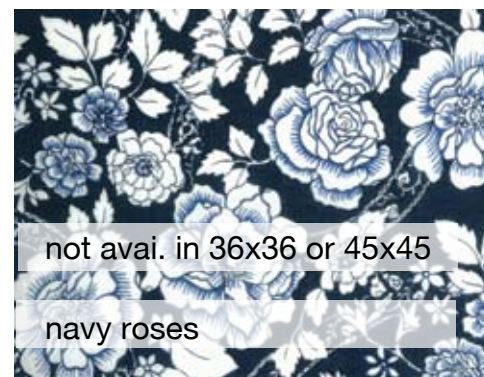
black and tan shadows



botanical blue



giant paisley



not avail. in 36x36 or 45x45

navy roses

not available in 45x45

black



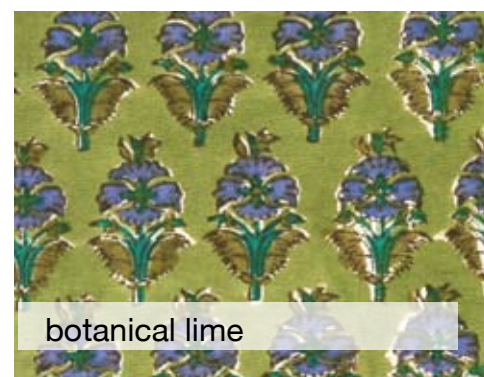
basketweave



blue parrot



desert zig zag



botanical lime



ironwork



violet cypress



chinese vase



blue roses



not available in 15x72

pink straw flower



twilight rose



orchids



moonlit garden



not available in 30x30

khaki tapestry



bramble blue



not available in 30x30

paisley floral purple



scattered flowers

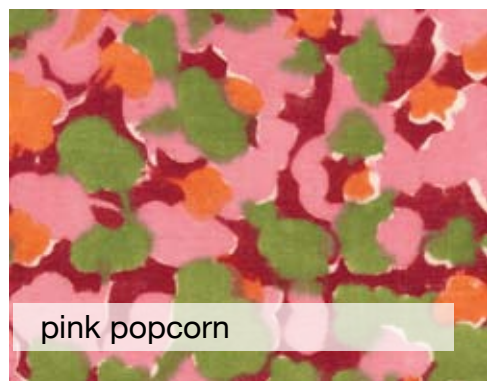


not available in 45x45

juniper lilies



summer wildflowers



pink popcorn



bendy straws



not available in 36x36

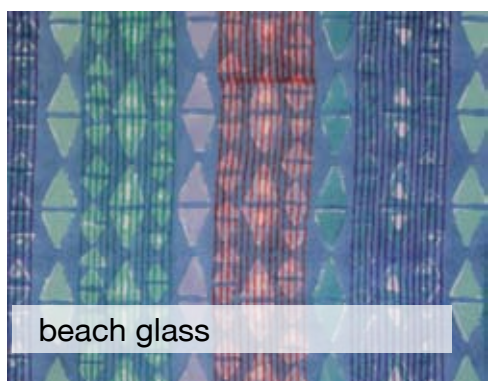
sorbet



purple stripe



pink paisley



beach glass



jewel flower



not available in 30x30

sweet shop



not available in 30x30

teal floral



summer nightingale



indigo green lotus



gentle bouquet



meryl



guinea stripe



not available in 30x30

tree of life



sprig



not available in 15x72

ginny



thistle



blue paisley



guinea hen



maroon medallions



red cloves



not available in 15x72

tan trellis



raspberry sea flower



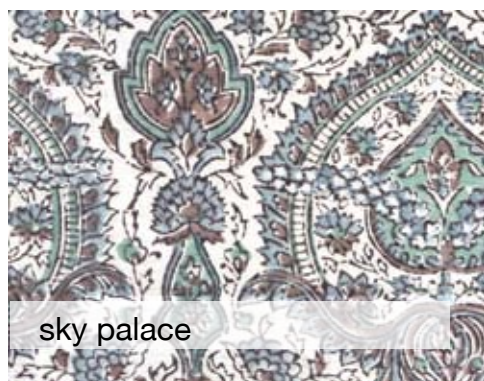
burgundy fan flower



peacock



rust lotus



sky palace



not available in 30x30

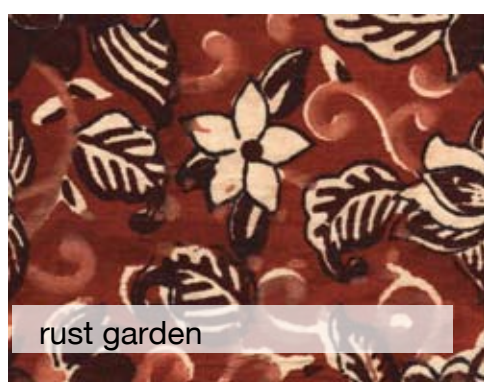
fossil



rose palace



swedish garden green



rust garden



filigree



iron cypress

30 x 30 Square Scarves Only!

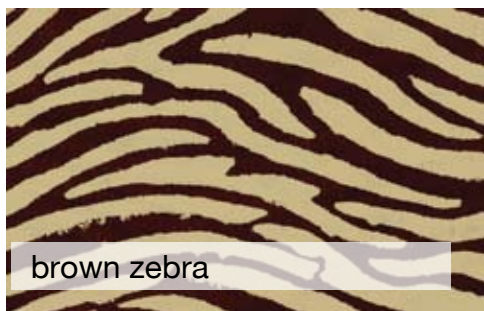
Because it takes the craftspeople at Anokhi months to print each of our collections, we order enough that we expect our scarves to be around for a while. But when a print sells out it is gone for good.

These prints are now ONLY available in 30x30 squares. Check out our website to see even more prints and up-to-date availability information.

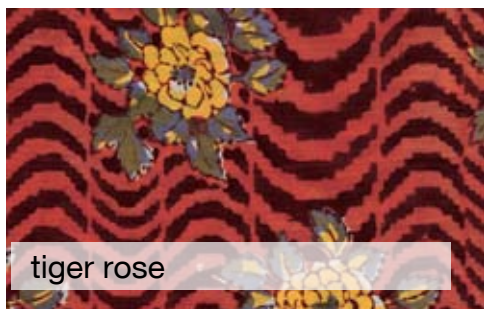
30" x 30" square: \$12



sun stamp



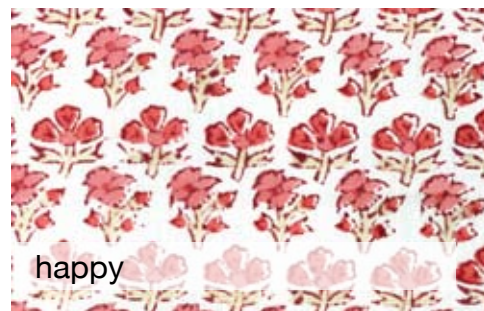
brown zebra



tiger rose



serenity red



happy



red poppies



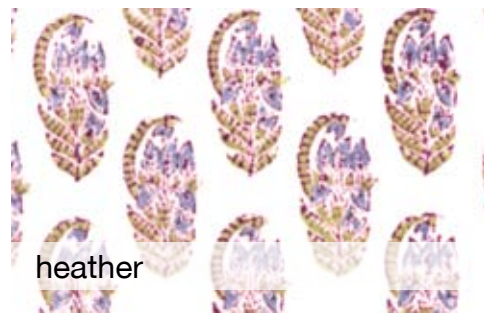
white violets



cafe parrot



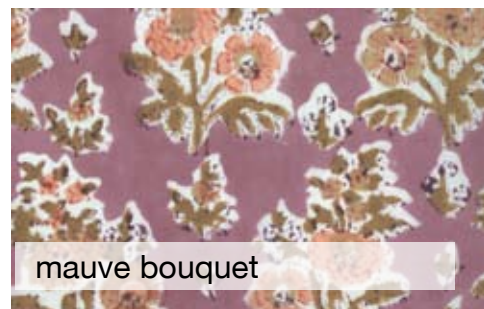
rmosaic stripe



heather



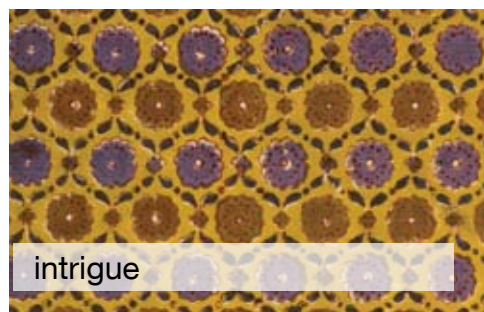
swedish garden



mauve bouquet



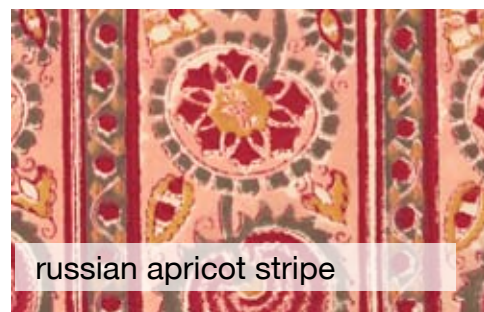
barely there



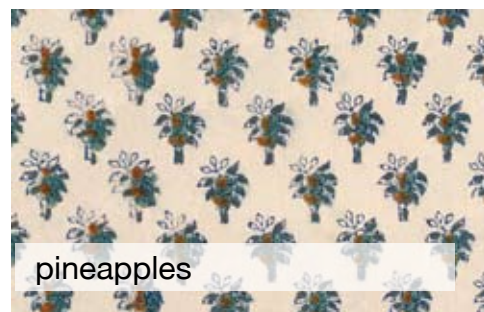
intrigue



red tapestry



russian apricot stripe



pineapples



serenity spice



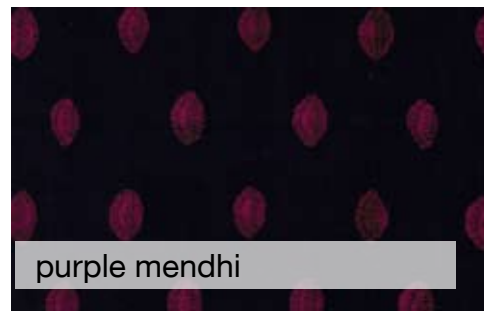
midnight cypress



red koi



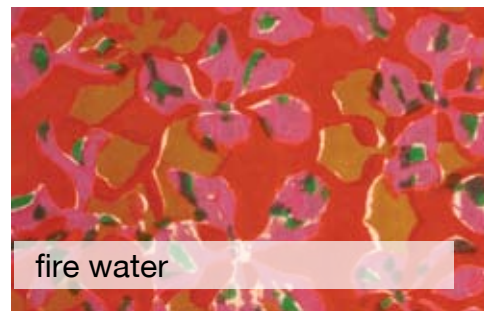
woodlands



purple mendhi



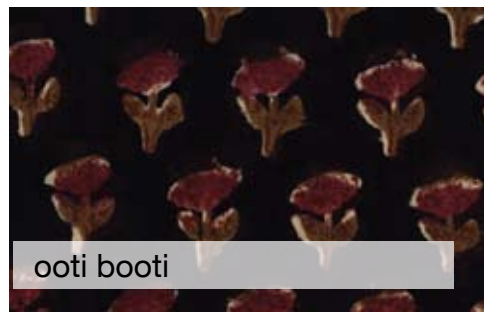
50's green



fire water



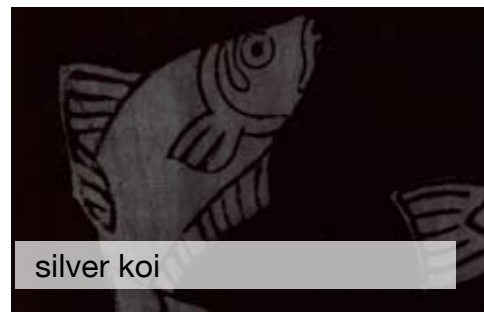
maroon lily pads



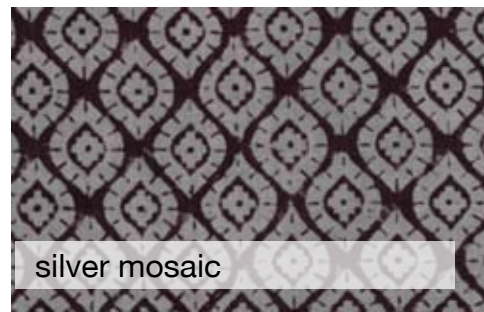
ooti booti



rust trees



silver koi



silver mosaic



olive vine



taj



pink vineflower



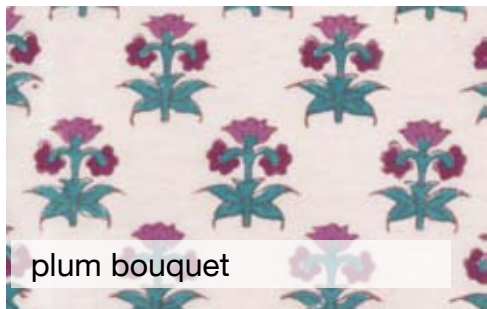
turquoise bridal wreath



blue sweeties



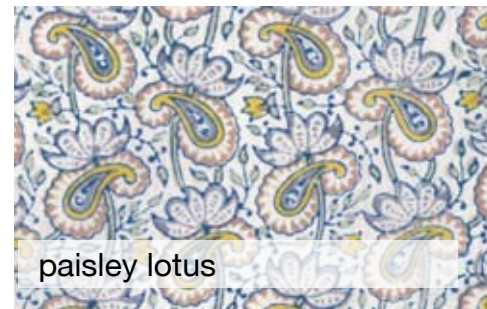
pink roses



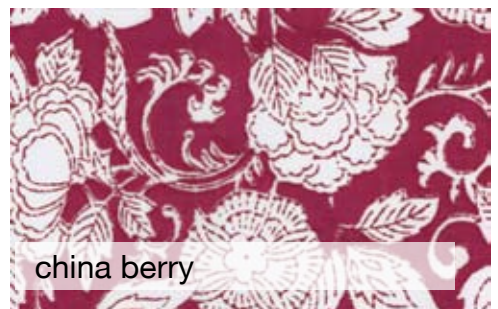
plum bouquet



provence



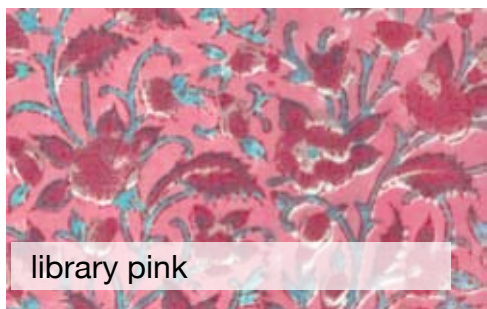
paisley lotus



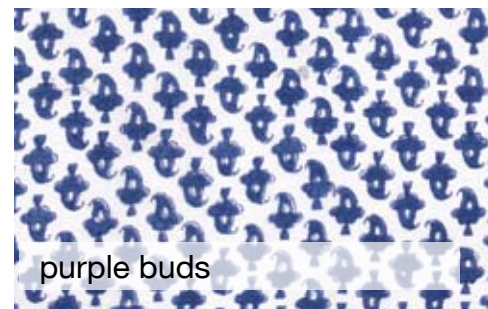
china berry



linda



library pink



purple buds



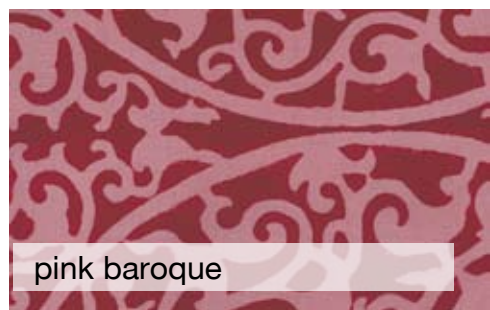
small lagoon



blue green parrot



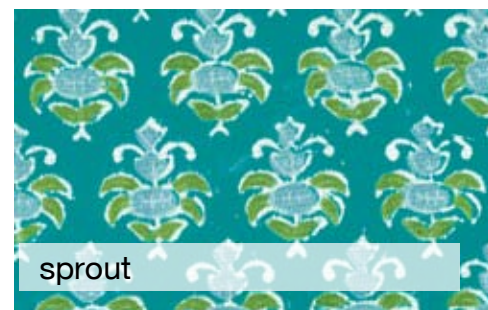
twilight



pink baroque



mung leaves



sprout



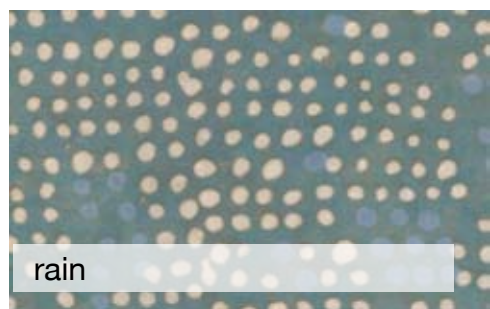
sweetest indigo flower



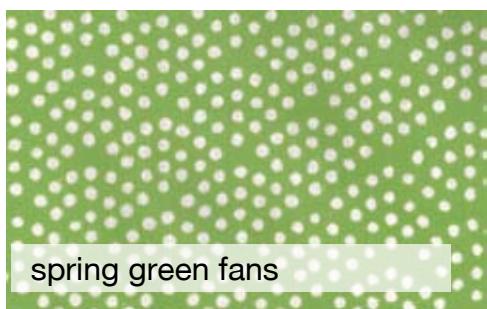
celadon poppy



china blue



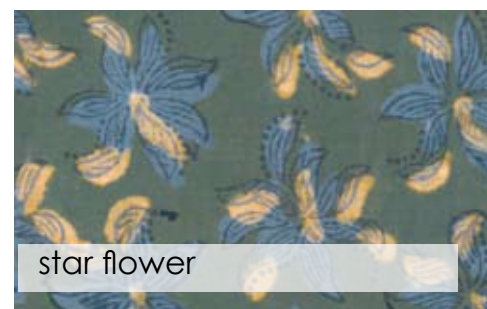
rain



spring green fans



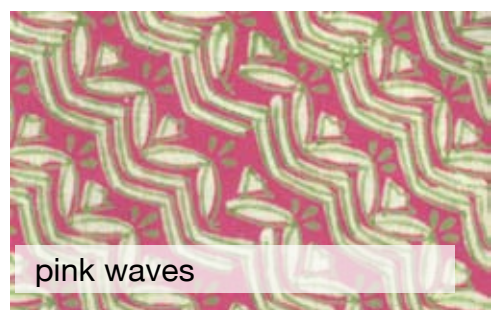
floating flowers



star flower



royal circles



pink waves



lime roses



medley



purple springtime



purple straw flower



royal empress

The Art of the Craft

Q. I can get cheaper machine or screen printed fabrics. Why do you charge more for your products?

A. Sure, machines can definitely create a cheaper print. But is cheaper always desirable? The founders of Anokhi answer that question with a resolute "No!" They believe that the art of fine woodblock printing is worth preserving, and that means providing sustained work for all of the craftspeople who produce it. Each Anokhi printed piece requires a collaboration between many skilled craftsmen, from block carvers to dye masters to printers and finishers. Our prints are produced with intense care and dedication to quality and craftsmanship.

Q. Are you a fair trade company?

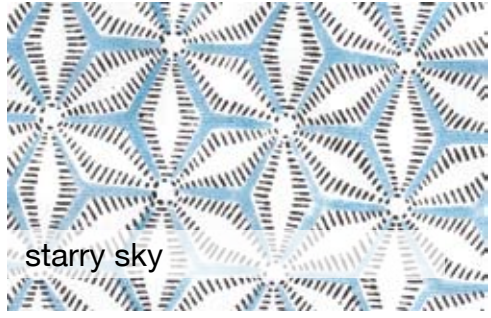
A. While Anokhi has not pursued fair trade certification, they were trading fairly before "fair trade" became a buzzword. Founded by dedicated environmentalists, green practices are a priority at Anokhi. All employees are given fair wages and work in conditions of their choosing. For most, this means remaining with their families in traditional printing villages, not transplanting to large cities. Most of Anokhi's craftspeople come from families who pass their skills and knowledge down from parent to child, and have been working with Anokhi for generations. Anokhi does not use child labor and provides daycare services for all mothers of young children working at Anokhi. Anokhi is also a proud member of Craftmark, an initiative to help Indian craftspeople connect with international markets.



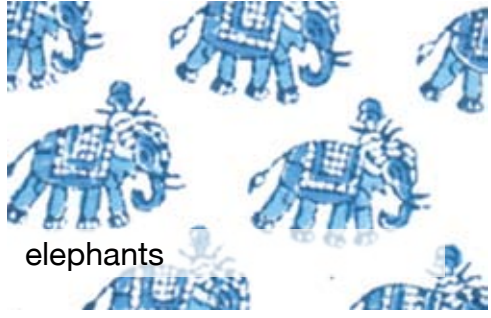
Q. What is Anokhi?

A. Anokhi is a design house based in Jaipur, India. For more than 30 years Anokhi has been dedicated to reviving and sustaining the traditional textile art of wood block printing.

Anokhi's designers come from across the globe to create fresh, new designs which are then hand carved into wooden blocks by master block carvers and printed by hand in traditional printing villages.



starry sky



elephants



jade circles



black on white



blue flame tree



indigo giraffe

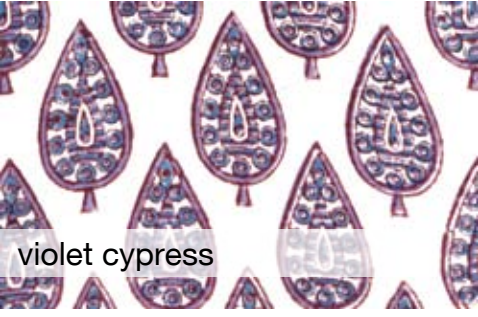
Sarongs



Wrap one around your waist, tie it like a scarf, wear it looped at the neck (at right) or use it like a shawl!
Our sarongs are made from the same great cotton as our regular scarves. Available in the prints shown on these two pages.
45 x 85": \$30



india



violet cypress



briar rose aqua



coral flame tree



coral blossom



pink popcorn

Kaftans



Our generously sized kaftan is the ultimate in lightweight loungewear. Two panel construction. Modest vertical slit at neck and prominent border detailing from arm to hem and along hem. Center back seam is 53 inches long, and the kaftan measures 42.5 inches from seam to seam. Available in the prints shown on this page.

One size: \$49



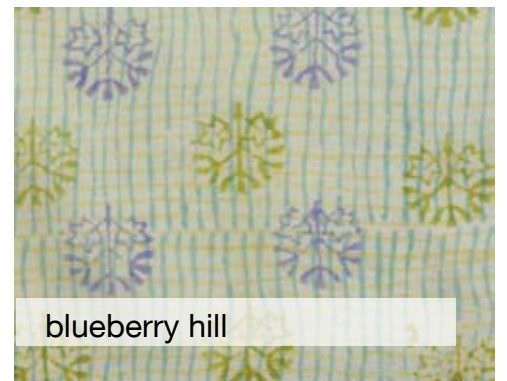
briar rose aqua



coral blossom



blue flame tree



blueberry hill



rust lotus



giant paisley



jade circles



colored sands



taupe mosaic



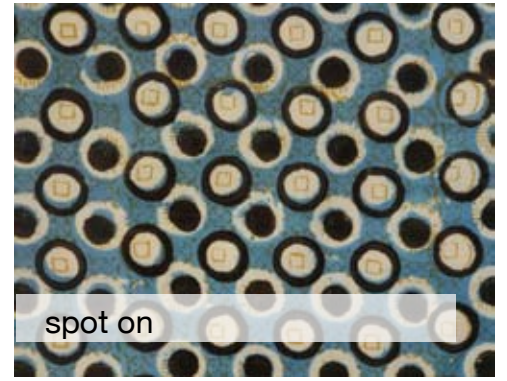
black and tan shadows



coral flame tree



double paisley



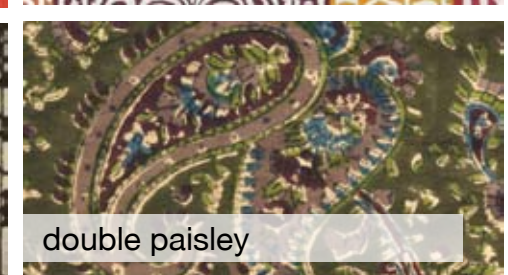
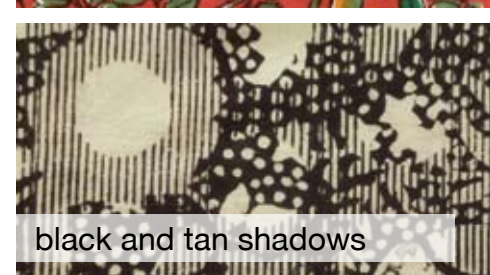
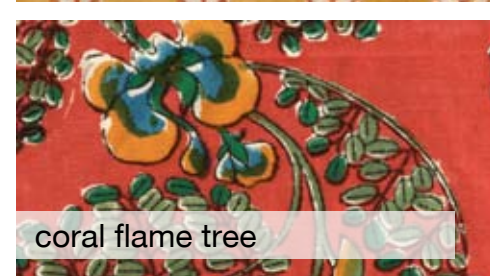
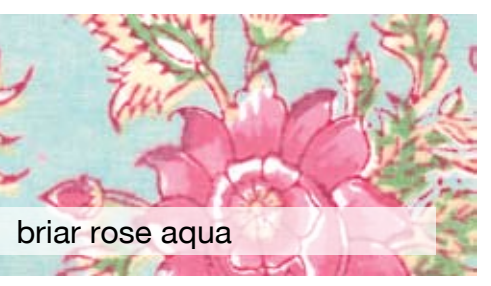
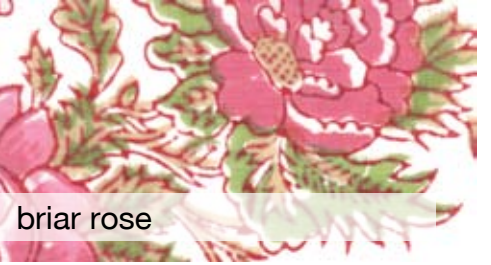
spot on

Kimono Robes

A slightly heavier cotton than our scarves, we now offer both a short and long kimono. The short kimono's center back seam is 40 inches long, and 25 inches seam-to-seam at waist. Our long kimono measures 53 inches long down the center back, and 27 inches seam-to-seam at the waist.

Available in the prints shown on this page only.

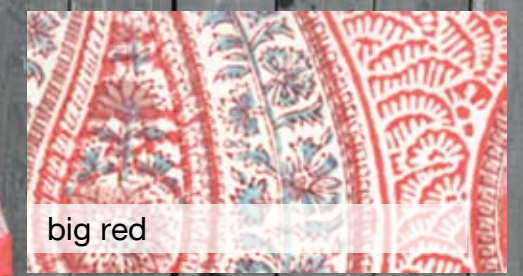
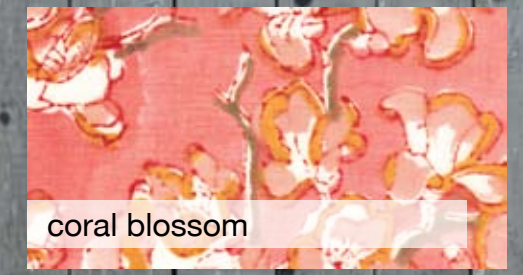
Short kimono: \$49
Long kimono: \$59



New! Peasant Tunic

Supremely comfortable, our peasant tunic has elaborate border detail at hem, up sides and around arms. Split neck and drawstring waist. 31.5 inches long down the center back, and 26 inches side seam to side seam with drawstring relaxed. Tassles at hem.

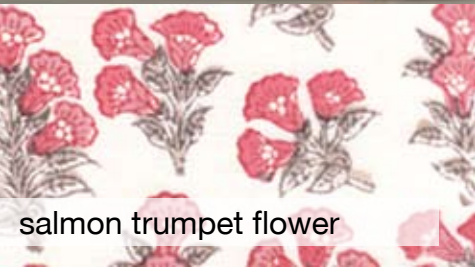
One size: \$39



Straight Tunic

Loose and comfortable, the straight tunic has a split neck and side slits for ease of movement. 33.5 inches long at center back. Border detail at cuff and hem. 3/4 sleeves.

Sold in sets of S-M-L: \$117



salmon trumpet flower



lavender teardrop



faded flowers



lilies on indigo



black on white

New!



Bias Cut Tunic

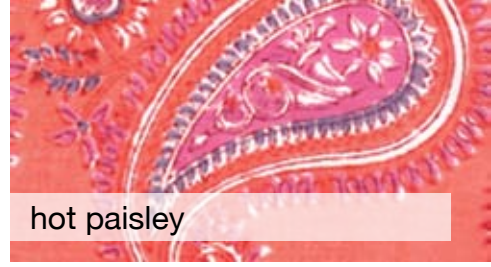
This slim fitting tunic is cut on the bias and has a split neck with border detail. 34.5 inches long at center back. The 3/4 length sleeves also have borders, and are slitted with beaded trim. Slits at hem for ease of movement.

Sold in sets of S-M-L: \$117

New!



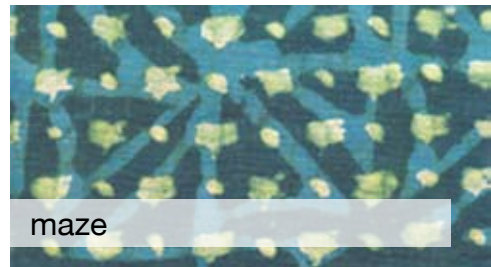
coral blossom



hot paisley



jade circles



maze



Table Linens

TABLECLOTHS AND NAPKINS:

Printed on a sturdier cotton than our scarves, these gorgeous tablecloths all have a coordinating border. We also offer a set of four 17x17" matching napkins.

Sizes:

55x55" square:	\$25
55x85" rectangle:	\$38
70x70" square:	\$38
70x108" rectangle:	\$49
Napkins (set of 4):	\$14

Note: New prints are listed below. Previously offered prints are shown opposite.



birar rose aqua



elephants



briar rose



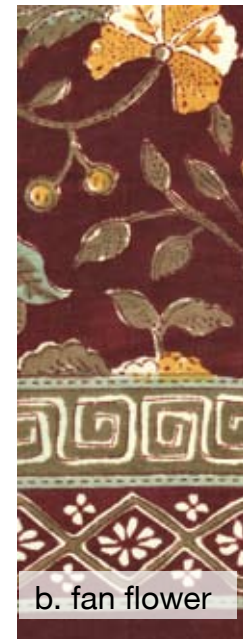
big red



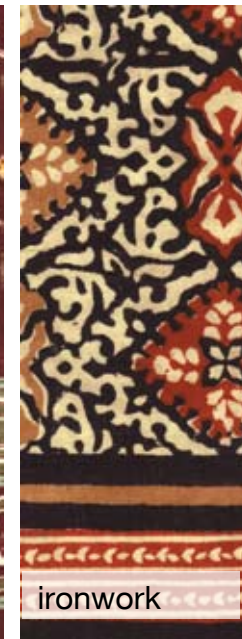
briar rose blue



coral blossom



b. fan flower

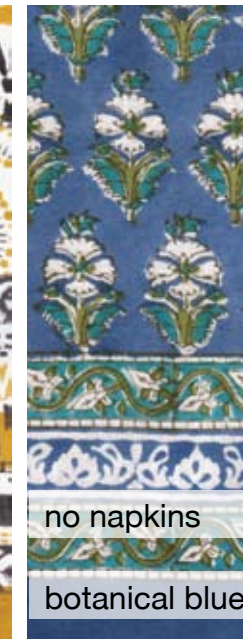


ironwork



no napkins

goldenrod



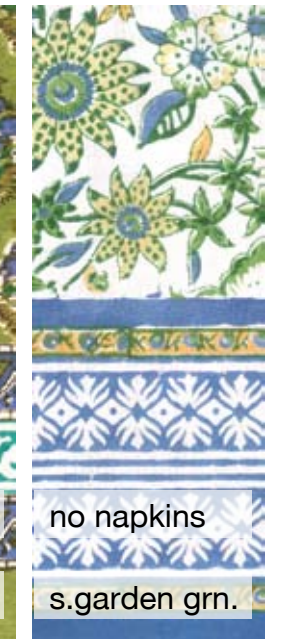
no napkins

botanical blue



no napkins

botanical lime



no napkins

s.garden grn.

ANOKHI

275 Cutts Road, Newport, NH 03773 USA

ph. 1.978.341.0753

fax. 1.208.977.8588

anokhi@anokhiusa.com



www.anokhiusa.com

1.978.341.0753

ANOKHI is a British-run design house based in Jaipur, India. Each print that we sell is an original creation of ANOKHI and is protected under copyright laws around the world.

